



haskell
EDUCATION

Learn. Think. Do.™

2024 LOOKBOOK



INNOVATION

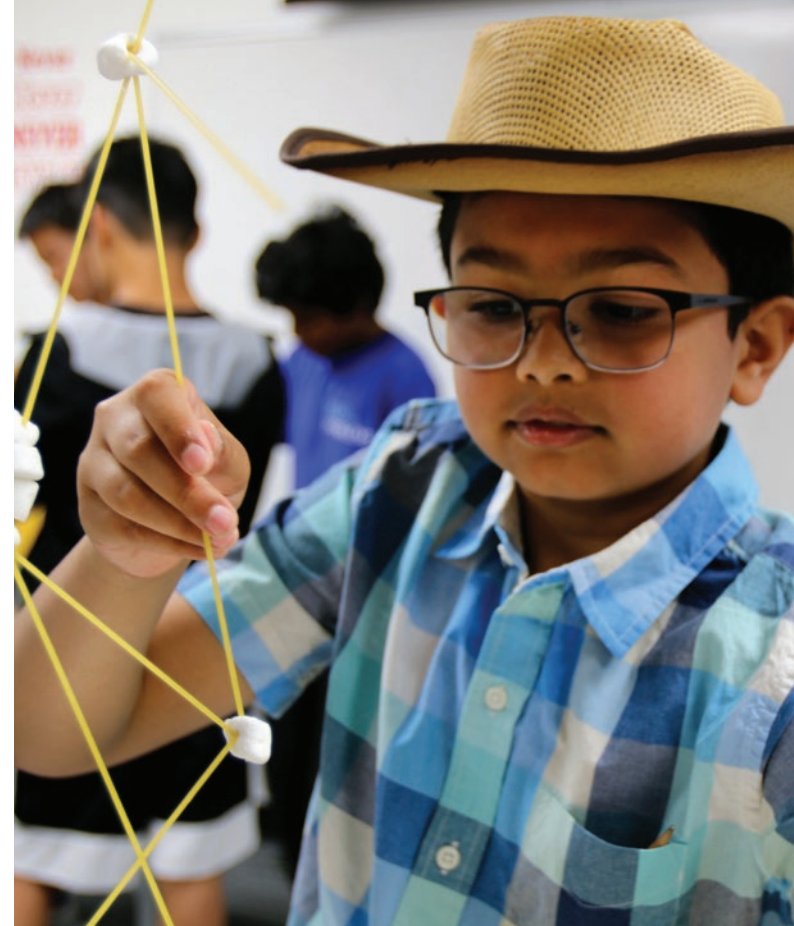
QUALITY





CHOICE





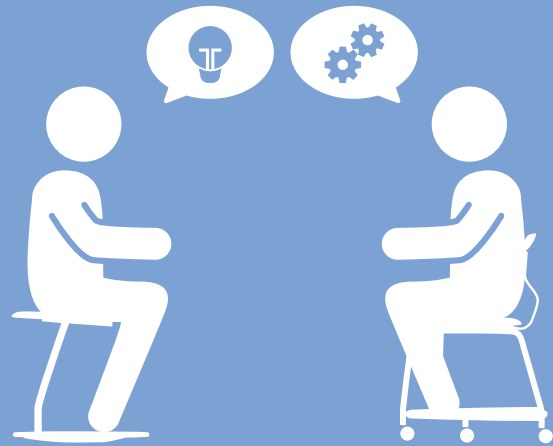
ENGAGEMENT





Learn.

The exploration and examination of ideas, data and concepts and their possible application for solving a problem or creating a solution.



Think.

The delivery of content, information, research, and data points that the student needs to begin their understanding of a concept or idea.



Do.

Connecting concepts, ideas, and theories into real solutions through building, making, prototyping, and presenting.

ABOUT HASKELL

Haskell Education designs and manufactures the highest quality furniture for the education marketplace. They serve institutions across multiple segments of learning including K-12, higher education and corporate training departments. Haskell Education's comprehensive portfolio of products are designed to enhance learning outcomes and support the highest levels of student engagement. When results are critical, make a difference with Haskell Education.

Learn. Think. Do.™



TABLE OF CONTENTS

Environmental Images

- Active Learning Classrooms 12
- Art Spaces 38
- Culinary Spaces 46
- Engineering Spaces..... 48
- Maker Spaces 56
- Media Commons & Library Spaces 72
- Robotics Labs 82
- Science Labs..... 84

At A Glance

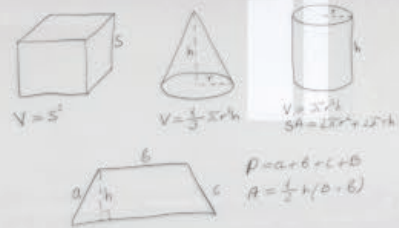
- 360 Chair Series 92
- Disco Stool Series..... 95
- Ethos Chair Series 96
- Explorer Series
 - Rover Table 98
 - Maker Table 100
 - Cargo Cart 106
 - Storage 110
 - Think Nook 119
- Fusion Sit to Stand Series 112
- Teacher Stations 114
- Voyager Series
 - Storage 116
 - Height Adjustable Table 118
- Echo Series
 - Table 120
 - Easel..... 122

ACTIVE LEARNING CLASSROOMS





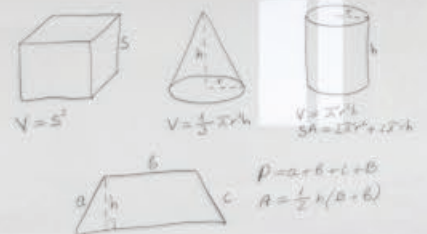
haskell
EDUCATION
Learn. Think. Do.™



haskell
EDUCATION
Learn. Think. Do.™



haskell
EDUCATION
Learn. Think. Do.™



haskell
EDUCATION
Learn. Think. Do.™



how does this happen? $\lim_{h \rightarrow 0} \frac{f(x+h)-f(x)}{h} + \lim_{h \rightarrow 0} \frac{g(x+h)-g(x)}{h}$
 $\rightarrow = f'(x) + g'(x)$
why isn't $\lim_{h \rightarrow 0} \frac{f(x+h)-f(x)}{h}$ zero? $f'(x) - f'(x)$?
+g(x)]
-g(x)]





$P = 2L + 2W$
 $A = LW$

$P = 4S$
 $A = S^2$

$P = a + b + c$
 $A = \frac{1}{2}bh$

$A + B + C = 180^\circ$













Whiteboard content (left side):

$$\ln_{x=0}^{\frac{1}{2}} \left(\frac{1}{2} \right) = \ln_{x=0}^{\frac{1}{2}} \ln_{x=0}^{\frac{1}{2}}$$
$$\ln_{x=0}^{\frac{1}{2}} \ln_{x=0}^{\frac{1}{2}} = \ln_{x=0}^{\frac{1}{2}} \ln_{x=0}^{\frac{1}{2}}$$
$$\ln_{x=0}^{\frac{1}{2}} \ln_{x=0}^{\frac{1}{2}} = \ln_{x=0}^{\frac{1}{2}} \ln_{x=0}^{\frac{1}{2}}$$
$$\ln_{x=0}^{\frac{1}{2}} \ln_{x=0}^{\frac{1}{2}} = \ln_{x=0}^{\frac{1}{2}} \ln_{x=0}^{\frac{1}{2}}$$
$$\ln_{x=0}^{\frac{1}{2}} \ln_{x=0}^{\frac{1}{2}} = \ln_{x=0}^{\frac{1}{2}} \ln_{x=0}^{\frac{1}{2}}$$
$$\ln_{x=0}^{\frac{1}{2}} \ln_{x=0}^{\frac{1}{2}} = \ln_{x=0}^{\frac{1}{2}} \ln_{x=0}^{\frac{1}{2}}$$
$$\ln_{x=0}^{\frac{1}{2}} \ln_{x=0}^{\frac{1}{2}} = \ln_{x=0}^{\frac{1}{2}} \ln_{x=0}^{\frac{1}{2}}$$
$$\ln_{x=0}^{\frac{1}{2}} \ln_{x=0}^{\frac{1}{2}} = \ln_{x=0}^{\frac{1}{2}} \ln_{x=0}^{\frac{1}{2}}$$
$$\ln_{x=0}^{\frac{1}{2}} \ln_{x=0}^{\frac{1}{2}} = \ln_{x=0}^{\frac{1}{2}} \ln_{x=0}^{\frac{1}{2}}$$
$$\ln_{x=0}^{\frac{1}{2}} \ln_{x=0}^{\frac{1}{2}} = \ln_{x=0}^{\frac{1}{2}} \ln_{x=0}^{\frac{1}{2}}$$

Whiteboard content (right side):

$$\triangle ABC \quad \angle A = 100^\circ - 60^\circ$$
$$\Sigma \text{ int} = 180^\circ$$
$$200^\circ - 40^\circ - 40^\circ = 120^\circ$$
$$\angle B = 40^\circ \quad \angle C = 40^\circ$$
$$c \text{ by } \angle C \quad \frac{c}{\sin C} = \frac{a}{\sin A}$$
$$\frac{c}{\sin 40^\circ} = \frac{1}{\sin 100^\circ}$$
$$c = \frac{\sin 40^\circ}{\sin 100^\circ}$$

Whiteboard content:

$$\ln_{x=0}^{\frac{1}{2}} \left(\frac{1}{2} \right) = \ln_{x=0}^{\frac{1}{2}} \ln_{x=0}^{\frac{1}{2}}$$
$$\ln_{x=0}^{\frac{1}{2}} \ln_{x=0}^{\frac{1}{2}} = \ln_{x=0}^{\frac{1}{2}} \ln_{x=0}^{\frac{1}{2}}$$
$$\ln_{x=0}^{\frac{1}{2}} \ln_{x=0}^{\frac{1}{2}} = \ln_{x=0}^{\frac{1}{2}} \ln_{x=0}^{\frac{1}{2}}$$
$$\ln_{x=0}^{\frac{1}{2}} \ln_{x=0}^{\frac{1}{2}} = \ln_{x=0}^{\frac{1}{2}} \ln_{x=0}^{\frac{1}{2}}$$
$$\ln_{x=0}^{\frac{1}{2}} \ln_{x=0}^{\frac{1}{2}} = \ln_{x=0}^{\frac{1}{2}} \ln_{x=0}^{\frac{1}{2}}$$
$$\ln_{x=0}^{\frac{1}{2}} \ln_{x=0}^{\frac{1}{2}} = \ln_{x=0}^{\frac{1}{2}} \ln_{x=0}^{\frac{1}{2}}$$
$$\ln_{x=0}^{\frac{1}{2}} \ln_{x=0}^{\frac{1}{2}} = \ln_{x=0}^{\frac{1}{2}} \ln_{x=0}^{\frac{1}{2}}$$
$$\ln_{x=0}^{\frac{1}{2}} \ln_{x=0}^{\frac{1}{2}} = \ln_{x=0}^{\frac{1}{2}} \ln_{x=0}^{\frac{1}{2}}$$
$$\ln_{x=0}^{\frac{1}{2}} \ln_{x=0}^{\frac{1}{2}} = \ln_{x=0}^{\frac{1}{2}} \ln_{x=0}^{\frac{1}{2}}$$
$$\ln_{x=0}^{\frac{1}{2}} \ln_{x=0}^{\frac{1}{2}} = \ln_{x=0}^{\frac{1}{2}} \ln_{x=0}^{\frac{1}{2}}$$



ART SPACES









CULINARY SPACES



ENGINEERING SPACES









MAKER SPACES

















haskell
EDUCATION

Learn. Think. Do.™











haskell
EDUCATION
Learn. Think. Do.

robotics lab



SCIENCE LABS







HASKELL EDUCATION

**"AT A
GLANCE"**

360™ CHAIR SERIES

360 Chair with Bookbag Rack & Back Rest



360 Chair with Back Rest



360 Chair with Bookbag Rack



360 Chair Backless



- Multiple Postures (forward, backward & side)
- Two Chairs fit under 60" Table
- Weight Capacity 360 lbs.
- Flexible Contoured Back
- 256 Standard Color Combinations
- Two places for Backpack Storage
- Back cantilevers off table for easy storage
- Casters or Glides
- Wall Saver
- Sizes 18", 24" & 30"

- Multiple Postures (forward, backward & side)
- Two Chairs fit under 60" Table
- Weight Capacity 360 lbs.
- Flexible Contoured Back
- 256 Standard Color Combinations
- Backpack Storage on Seat Back
- Back cantilevers off table for easy storage
- Casters or Glides
- Wall Saver
- Sizes 18", 24" & 30"

- Multiple Postures (forward & side)
- Two Chairs fit under 60" Table
- Weight Capacity 360 lbs.
- 256 Standard Color Combinations
- Bookbag Rack
- Casters or Glides
- Sizes 18", 24" & 30"

- Multiple Postures (forward, backward & side)
- Two Chairs fit under 60" Table
- Weight Capacity 360 lbs.
- Flexible Contoured Back
- 256 Standard Color Combinations
- Casters or Glides
- Wall Saver
- Sizes 18", 24" & 30"

360™ CHAIR SERIES

DISCO™ STOOL

360 Chair Three Legged



360 Chair Three Legged Backless



Disco Stool



- Multiple Postures (forward, backward & side)
- Two Chairs fit under 60" Table
- Weight Capacity 360 lbs.
- Flexible Contoured Back
- 256 Standard Color Combinations
- Bookbag Storage on seat back
- Back cantilevers off table for easy storage
- Glides Only
- Wall Saver
- Sizes 18", 24" & 30"

- Multiple Postures (forward & Side)
- Two Chairs fit under 60" Table
- Weight Capacity 360 lbs.
- 256 Standard Color Combinations
- Glides Only
- Sizes 18", 24" & 30"

- Larger scale for young adults and adults alike
- Cantilevered base design for easier foot placement
- Rocks and rotates 360 degrees.
- Nylon base is flexible for foot fidgeting
- Grab and go handle
- 8 seat colors available

ETHOS™ CHAIR SERIES

Storage Base Chair & Tablet Arm



- 360 Swivel
- Trash Fall through the base to the floor
- Casters or Glides
- Oversized opening
- Large work surface
- Non-Handed work surface
- Optional Cup Holder
- 8 Color Options

Storage Base Chair



- 360 Swivel
- Trash Fall through the base to the floor
- Casters or Glides
- Oversized opening
- 8 Color Options

Five Star Base Chair



- 360 Swivel
- Casters or Glides
- Height Adjustable
- 8 Color Options

Stool



- 360 Swivel
- Casters or Glides
- Adjustable Foot Ring
- 8 Color Options

THE ROVER® TABLE

Rover Table



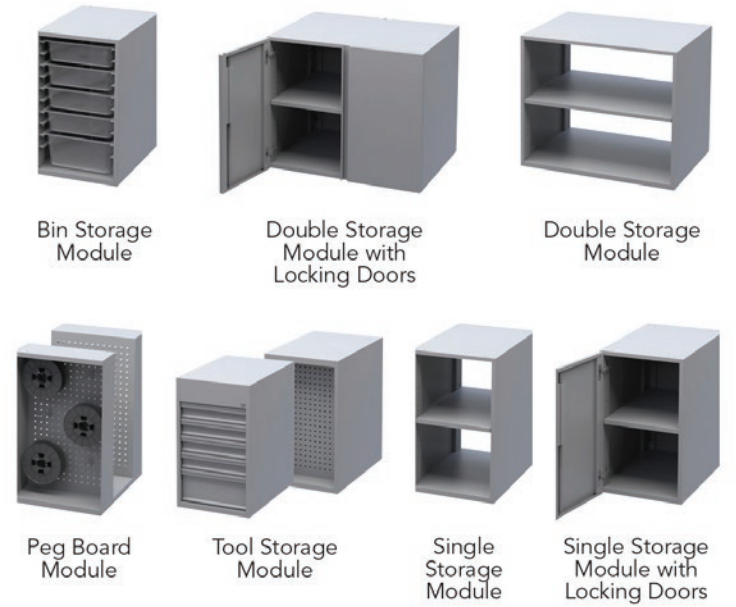
Rover Table 3 Module



Rover Table Custom



Modules



- Maker Table Passes through Door Threshold
- Butcher Block Flip Top
- Steel Frame Construction
- 2 Bin Storage Modules (field replaceable)
- Power Option
- 6 Stools
- Locking Caster

- Maker Table Passes through Door Threshold
- Butcher Block Flip Top
- Steel Frame Construction
- Power Option
- 4 Stools
- Locking Caster

- Maker Table Passes through Door Threshold
- Butcher Block Flip Top
- Steel Frame Construction
- Custom Steel Storage Modules (field replaceable)
- Can Build out Storage across entire table
- Power Option
- Locking Caster

EXPLORER SERIES® MAKER TABLE

Maker Table



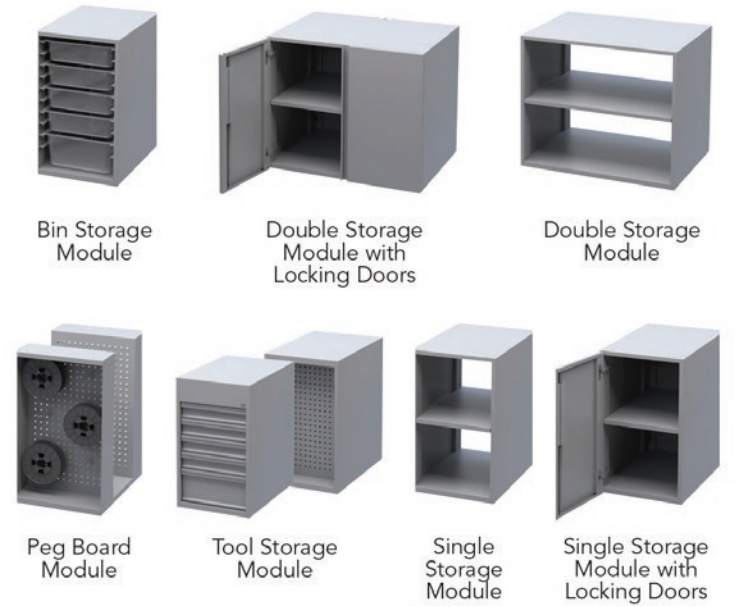
- Butcher Block Top + other materials
- Steel Frame Construction
- Custom Steel Storage Modules (field replaceable)
- Steel Frame
- Locking Caster
- Power Options

Maker Table 2 Module



- Butcher Block Top + other materials
- Steel Frame Construction
- Custom Steel Storage Modules (field replaceable)
- Locking Caster
- Power Options

Modules



EXPLORER SERIES® MAKER TABLE

Maker Table Five-Bin



Maker Table Locking Storage



Maker Table Locking Peg Open Storage



Maker Table Bin Toolbox Storage



- Butcher Block Top + other materials
- Steel Frame Construction
- Five-Bin Steel Storage Modules (field replaceable)
- Power Option
- Locking Caster

- Butcher Block Top + other materials
- Steel Frame Construction
- Locking-Steel Storage Modules (field replaceable)
- Power Option
- Locking Caster

- Butcher Block Top + other materials
- Locking- Peg-Open Steel Storage Modules (field replaceable)
- Power Option
- Locking Caster

- Butcher Block Top + other materials
- Steel Frame Construction
- Bin-Toolbox Steel Storage Modules
- Power Option
- Locking Caster



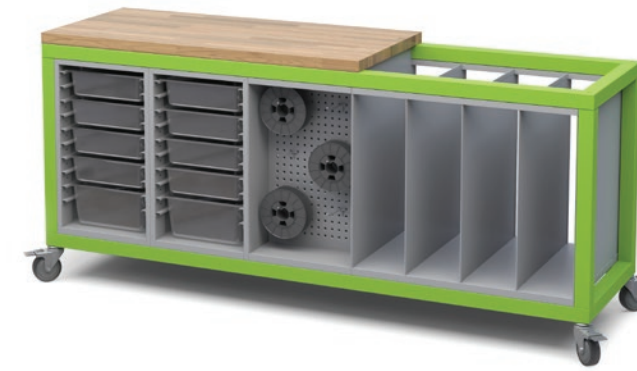
EXPLORER SERIES® CARGO CART

Cargo Cart



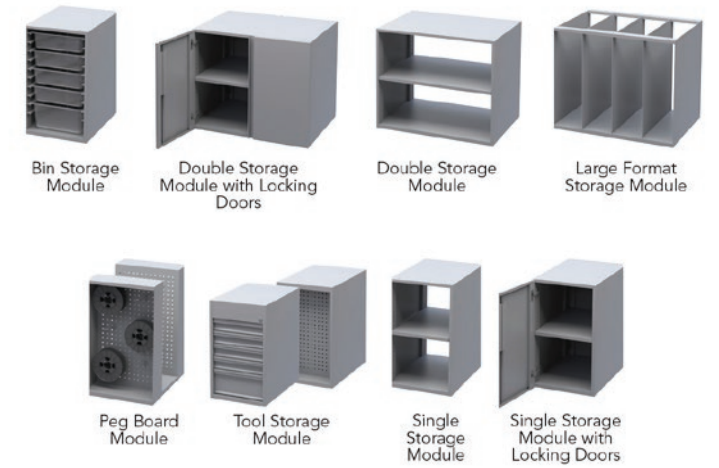
- Butcher Block Top + other materials
- Steel Frame Construction
- Custom Steel Storage Modules
- Passes through a Door Threshold
- Locking Caster

Cargo Cart



- Two-thirds Butcher Block Top + other materials
- Steel Frame Construction
- Custom Steel Storage Modules
- Passes through a Door Threshold
- Locking Caster

Modules



EXPLORER SERIES® CARGO CART

Cargo Cart Locking Peg Bin



Cargo Cart Locking Storage



Cargo Cart Five-Bin Storage



Cargo Cart Locking Toolbox Open



- Butcher Block Top + other materials
- Steel Frame Construction
- Locking Peg Bin Steel Storage Modules (field replaceable)
- Passes through Door Threshold
- Locking Caster

- Butcher Block Top + other materials
- Steel Frame Construction
- Locking Steel Storage Modules (field replaceable)
- Passes through Door Threshold
- Locking Caster

- Butcher Block Top + other materials
- Steel Frame Construction
- Locking Five- Bin Steel Storage Modules (field replaceable)
- Passes through Door Threshold
- Locking Caster

- Butcher Block Top + other materials
- Steel Frame Construction
- Locking-Toolbox-Open Steel Storage Modules (field replaceable)
- Passes through Door Threshold
- Locking Caster

EXPLORER SERIES® STORAGE

Cubby Storage Bin



Cubby Storage Shelves



Tall Storage Bin



Tall Storage Shelves



- Double Wall Steel construction
- Locking Casters
- White Board Back
- 47" x 26.5" x 38"
- Shelf Height 7"
- Culinary Grade Clear Bins
(Commercial Dishwasher Safe)

- Double Wall Steel construction
- Locking Casters
- White Board Back
- 47" x 26.5" x 38"
- Shelf Height 7"

- Double Wall Steel construction
- Locking Casters
- White Board Back
- 47" x 26.5" x 66"
- Shelf Height 6.5"
- Culinary Grade Clear Bins
(Commercial Dishwasher Safe)

- Double Wall Steel construction
- Locking Casters
- White Board Back
- 47" x 26.5" x 66"
- Shelf Height 14"

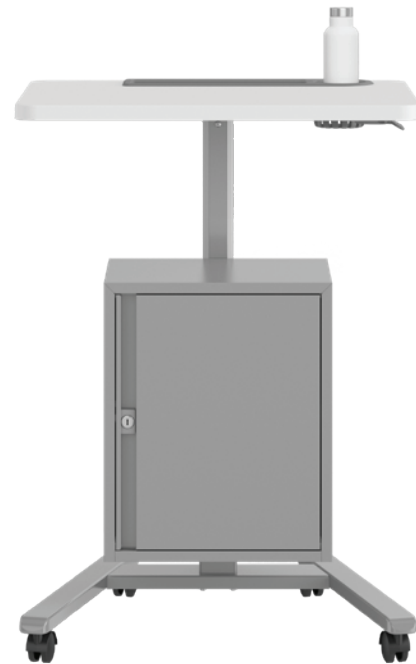
FUSION™ SIT TO STAND SERIES

Sit to Stand



- Height Adjustable 28" - 42"
- Locking Casters
- Worksurface 22" x 26"
- Optional Lap Top Shelf
- Optional Tablet Stand
- Optional Cup Holder

Lectern with Storage



- Height Adjustable 28" - 42"
- Locking Casters
- Storage Cabinet with Lock
- Worksurface 22" x 26"
- Optional Tablet Stand
- Optional Cup Holder

Large Sit to Stand



- Height Adjustable 28" - 42"
- Locking Casters
- Worksurface 28" x 36"
- Optional Lap Top Shelf
- Optional Tablet Stand
- Optional Cup Holder

Large Lectern with Storage



- Height Adjustable 28" - 42"
- Locking Casters
- Storage Cabinet with Lock
- Worksurface 28" x 36"
- Optional Tablet Stand
- Optional Cup Holder

TEACHER STATIONS

Echo Podium Educator Desk



Echo Mobile Educators Desk



Fuzion Kidney Teacher Desk



Fuzion Rectangle Teacher Desk



- Various Size Rectangle Top
- Non-Handed
- Magnetic Clip
- Locking Casters
- Modesty Panel

- Rectangle top 24" x 54" or 24" x 60"
- Non-Handed Ped
- Locking Casters
- Modesty Panel

- Kidney Top
- Mobile Ped
- Crescent Shape Mobile Lectern
- Locking Casters

- Rectangle Top
- Mobile Ped
- D-Shaped Mobile Lectern
- Locking Casters

VOYAGER® SERIES STORAGE

Small Storage Bin



Small Storage Shelves



Tall Storage Bin



Tall Storage Shelves



- Single Wall Steel construction
- Locking Casters
- White Board Back
- 41" x 19" x 39.6"
- 24 Clear Bins 12" x 16.8" x 3"

- Single Wall Steel construction
- Locking Casters
- White Board Back
- 36" x 19" x 39.6"

- Single Wall steel construction
- Locking Casters
- White Board Back
- 41" x 19" x 56.6"
- Shelf Height 6.5"
- 36 Clear Bins 12" x 16.8" x 3"

- Single Wall Steel construction
- Locking Casters
- White Board Back
- 36" x 19" x 56.6"

VOYAGER® SERIES HEIGHT ADJUSTABLE TABLE

EXPLORER SERIES® THINK NOOK

Height Adjustable Table



- Adjustable from 30" to 40" in height
- Comes in butcher block and laminate tops
- 36" / 42" Width x 60" / 72" lengths available
- ADA / wheelchair compliant

Think Nook



- Steel Frame
- Upholstered Seat
- Power Option
- White Board Worksurface
- Locking Caster

ECHO™ TABLE SERIES

Individual Student Desk



- Rectangle or Keystone Top
- Sizes 22" x 26" or 24" x 34"
- Locking Casters/Glides/wheelbarrow
- Echo Leg or Height Adjustable Leg

Chevron Table



- Chevron Top
- Various Top Size Options 48" x 84"
- Locking Casters/Glides/wheelbarrow
- Echo Leg or Height Adjustable Leg

Rectangle Table



- Rectangle Top
- Various Top Size Options
- Locking Casters/Glides/wheelbarrow
- Echo Leg or Height Adjustable Leg

Flip Nesting Table



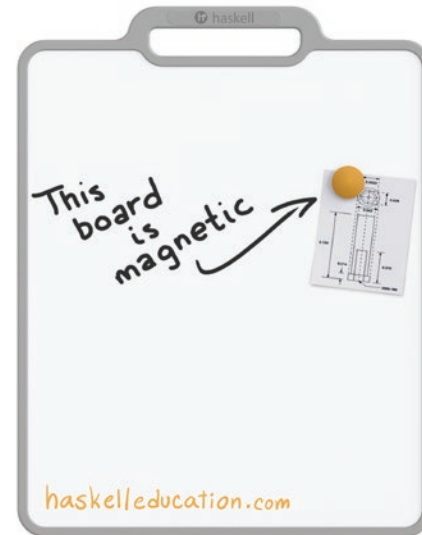
- Rectangle or Chevron Flip Top
- Nesting Legs
- Various Top Size Options
- Locking Casters

Easel



- Mobile Easel
- Holds 40 Individual Boards
- Steel Frame
- Locking Caster

Personal Marker Board



- Dry erase surface that is also magnetic
- Double-sided
- Durable Enamel finish over Steel
- Non-ghosting writing surface
- Multiple display options
- Provides privacy during testing or focused work



haskell
EDUCATION

Learn. Think. Do.™

273 Montgomery Ave

Bala Cynwyd | PA | 19004

800-334-8888

www.haskelleducation.com

2024 LOOKBOOK