

Storage Solutions

Office • Commercial • Institutional • Industrial • Educational



www.SanduskyLee.com

2019-2020



1
1



Opening the door to a greener future...

The decision to be “green” should not be taken lightly, so when Sandusky Lee revamped their Littlestown, Pennsylvania facility, it was decided to take a keen look towards the future. It became quite clear in order to not only sustain the company, but also the environment at large, the facility had to try and offset its carbon footprint and not be entirely reliant on the electrical grid. This decision has solidified Sandusky Lee’s dedication to be an industry leader and will prove to future generations what a company can environmentally achieve.



>> Chart House Energy and GeoSolar Energy Farm Inc. designed, procured, installed and commissioned this 400kW system (the wattage equivalency of powering 8,000 50-watt lightbulbs for one hour).



>> 100% of the solar system was built with U.S.A. owned and manufactured components, creating American jobs.



>> It makes use of under-utilized space, with no continuous draw from MetEd. Additionally, any power that is not used can be sold back to the grid for public consumption.



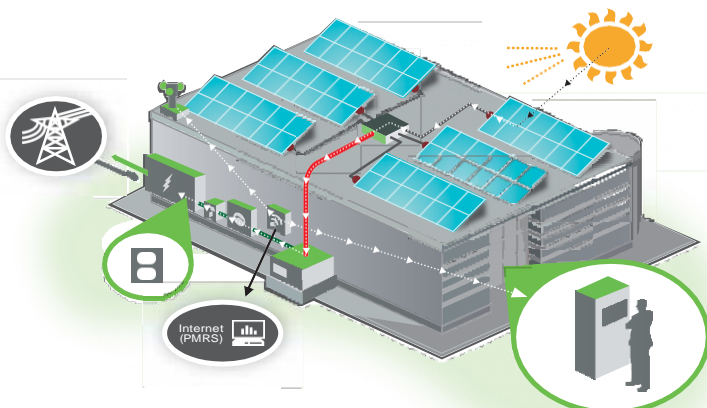
>> These panels function well in less than ideal solar conditions, providing power production in a wide variety of conditions including cloudy and rainy days, and even moonlight.

92 %

>> The power generated offsets 92% of the power used in the factory.

86

>> Assuming the average household uses 6,000 kWh/yr or the equivalent of 86 households of power, the carbon offset will be 12,682 Tons of CO₂ over the next 40 years.



HOW DOES IT WORK?

The 2,700+ solar panels (Photovoltaic Panels) create electrical current when exposed to sunlight, generating 518,000 kWh/yr or the equivalent of 86 homes. Over time, the rows of panels collectively achieve desired voltage and create as much power in a year as the facility uses. The generated electricity can then be used to power the facility or be sold back to the “grid” for general consumption.

TABLE OF CONTENTS

SANDUSKY LEE PRODUCTS

Bin Storage.....	34	Plastic Shelving	34
Bookcases		Shoe Racks	40
Mobile	12	Steel Shelving	35 – 37
Radius Edge.....	12	Wine Rack	41
Stationary.....	12	Wire Shelving.....	38 – 41
Booktrucks	18 – 19	Shopping Carts	42
Carts & Stands.....	26	Storage Cabinets	
Chairs		American Heritage Series Storage System	15
Chair Dolly	33	Classic Series Storage Cabinets	9
Folding Chairs	32	Clear View — See-Thru Storage Cabinets	8
Computer Security Cabinets	27	Elite Series Storage Cabinets	4 – 6
Computer / Monitor Workstation.....	28	Extra Heavy-Duty Storage.....	14
Cubby Storage Organizer	21	Fire Extinguisher Cabinets.....	31
Desks	24 – 25	Janitorial Supply Cabinet	16
File Cabinets		KD / SnapIt Series — Ready to Assemble	17
Flat Files.....	23	Pull-Out Tray Storage Cabinets	14
Hanging Files	23	Radius Edge Storage Cabinets	6
Lateral File Cabinets	22	Safety Cabinets.....	30
File Carts	18 – 19	Sliding Door Storage Cabinets.....	6
Hanging Files	23	Stainless Steel Storage	11
Kid’s Furniture	21	System Series Storage Cabinets	10
Laptop Security	29	Transport Mobile Storage Cabinets	7
Lockers	20	Value Line Series Storage Cabinets	16
Pallet Jack	33	Wall Cabinets.....	13
Pallet Rack Components	36	Tables	
Platform Trucks.....	33	Activity Tables.....	33
Plastic Storage		Folding Tables	32
Milk Crate	34	Tablet Security Carts	29
Storage Tower	34	Utility Carts.....	26
Totes	34	Wagons.....	42 – 43
Shelving		Work Benches.....	14
Garment Racks	41		
Mobile Storage Rack	37		

SANDUSKY BUDDY PRODUCTS

Cash Boxes.....	48 – 49	Inter-Office Mailboxes	50
Clothing Care	61	Janitorial Products.....	62
Collection Boxes.....	50	Key Cabinets & Key Filing	46 – 47
Display Racks		Lobby Sign Holder.	57
Display Racks	57	Organizers	
Eclipse Steel Literature Display Racks	56	Book Organizers.....	52
Steel Data Racks.....	58	Classic Desk Organizers	51
Steel Literature Display Racks	56	Mirage Desk Organizers	53
Time and Data Racks.....	55	Steel Organizers.....	52
Wall Pockets	59	Trio Desk Organizers	53
Wire Ware	60	Wire Mesh	54
File Card Storage Box	52	Safes.....	44 – 45

ELITE SERIES STORAGE CABINETS



Storage Cabinets with Recessed Handle

Heavy gauge steel, contract quality, meets ANSI/BIFMA shelf standards, 200 lbs. capacity per shelf evenly distributed (46" 230 lbs.). Four fully adjustable shelves on 2" centers, plus raised bottom shelf, contemporary three point recessed locking handle, three sets of hinges on each door. Five year limited warranty. Powder coat finish. Shipped assembled (•).

EA4R	361872-00	36"W X 18"D X 72"H
EA4R	362472-00	36"W X 24"D X 72"H
EA4R	462472-00	46"W X 24"D X 72"H
EA4R	462478-00	46"W X 24"D X 78"H

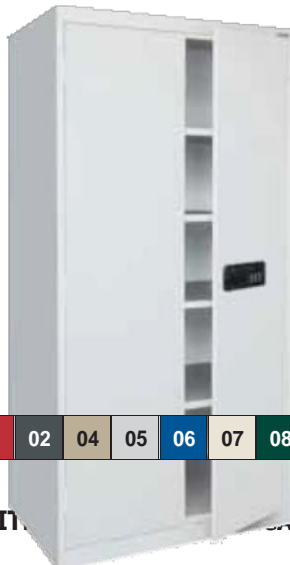


Storage Cabinets with 1 Swing Handle and 1 Dummy Handle

Heavy gauge steel, contract quality, meets ANSI/BIFMA shelf standards, 200 lbs. capacity per shelf evenly distributed (46" 230 lbs.). Four fully adjustable shelves on 2" centers, plus raised bottom shelf, contemporary three point swing locking handle, three sets of hinges on each door. Five year limited warranty. Powder coat finish. Shipped assembled (•).

No Longer Available	

• Handle requires some assembly.



Storage Cabinets with Keyless Electronic Handle

Heavy gauge welded steel construction, meets ANSI/BIFMA shelf standards, 200 lbs. capacity per shelf evenly distributed (46" 230 lbs.). Four adjustable shelves on 2" centers, plus raised bottom shelf. Three sets of hinges on each door. The cabinets are equipped with a keyless electronic coded locking system. The coded lock is available with two passwords, the administrator and the user. These can be changed to any combination of numbers, four for the user and six for the administrative password. The keypad also keeps a record of the day, date and time of when the cabinet is accessed, which can be displayed when the mechanism is idle. Emergency key included. Powder coat paint finish.

EA4E	361872-00	36"W X 18"D X 72"H
EA4E	362472-00	36"W X 24"D X 72"H
EA4E	462472-00	46"W X 24"D X 72"H
EA4E	462478-00	46"W X 24"D X 78"H



ELITE SERIES STORAGE CABINETS

A. Desk Height Cabinets

with adjustable shelf

Heavy gauge steel, contract quality, meets ANSI/BIFMA shelf standards, 200 lbs. capacity per shelf evenly distributed. One fully adjustable shelf plus raised bottom shelf. EA11 361830-00 has three point locking handle. EA11 182430-00 has cam locking handle. Powder coat finish. Shipped assembled (•).

No Longer Available	
---------------------	--



B. Counter Height Cabinets

with adjustable shelves

Heavy gauge steel, contract quality, meets ANSI/BIFMA shelf standards, 200 lbs. capacity per shelf evenly distributed (46" 230 lbs.). Two fully adjustable shelves plus raised bottom shelf. Contemporary three point recessed locking handle. Five year limited warranty. Powder coat finish. Shipped assembled (•).

EA2R 361842-00	36"W X 18"D X 42"H
EA2R 362442-00	36"W X 24"D X 42"H
EA2R 462442-00	46"W X 24"D X 42"H

C.



D. Combination Cabinets

with adjustable shelves

Combination cabinet interior includes a full width top shelf, three adjustable side shelves, and a garment rod. Contemporary three point recessed locking handle. Powder coat finish. Interior requires assembly (•).

EACR 361872-00	36"W X 18"D X 72"H
EACR 362472-00	36"W X 24"D X 72"H
EACR 462472-00	46"W X 24"D X 72"H

Available with 1 swing handle and 1 dummy handle, replace "R" with "2" in stock number.

E. Wardrobe Cabinets

with adjustable shelf

Wardrobe cabinet interior includes a full shelf and garment rod. Contemporary three point recessed locking handle. Powder coat finish. Interior requires assembly (•).

EAWR 362472-00	36"W X 24"D X 72"H
EAWR 462472-00	46"W X 24"D X 72"H



• Handle requires some assembly.

01 02 04 05 06 07 08 09 22 MG SPECIAL ORDER COLORS AVAILABLE



ELITE SERIES RADIUS EDGE



Radius Profile



Radius Profile

Radius Edge Storage

Heavy 22 gauge, welded steel construction. Contract quality, meets ANSI/BIFMA shelf standards, 200 lbs. capacity per shelf evenly distributed. One center fixed shelf and three fully adjustable shelves on 2" centers plus raised bottom shelf. Contemporary push button door handle with keys. Leg levelers allow adjustments for uneven flooring. Three sets of hinges on each door. Powder coat finish. Shipped assembled.

ER4P 361872-00	36"W X 18"D X 72"H
ER4P 362472-00	36"W X 24"D X 72"H

02 05 07 09

Radius Edge Clear View Storage

Durable acrylic doors provide full visibility of contents. Center fixed shelf and three fully adjustable shelves on 2" centers plus raised bottom shelf. Contemporary push button handle with keys. Leg levelers. Meets/exceeds ANSI/BIFMA shelf standards, 200 lbs. capacity per shelf evenly distributed. Powder coat finish. Shipped assembled.

ER4V 361872-00	36"W X 18"D X 72"H
----------------	--------------------



ELITE SERIES SLIDING DOOR STORAGE



Sliding Door Storage Cabinets

Convenient, space-saving sliding door cabinets with locking doors. Fully adjustable shelves adjust on 1" centers plus raised bottom shelf, 200 lbs. capacity per shelf evenly distributed (46" 230 lbs.). Welded steel construction. Powder coat finish. Shipped assembled.

BA1S 361829-00	36"W X 18"D X 29"H
BA2S 361842-00	36"W X 18"D X 42"H
BA4S 361872-00	36"W X 18"D X 72"H

Sliding Door Clear View Storage Cabinets

Durable acrylic doors provide full visibility of contents. Convenient, space-saving sliding door cabinets with locking doors. Fully adjustable shelves adjust on 1" centers plus raised bottom shelf, 200 lbs. capacity per shelf evenly distributed (46" 230 lbs.). Welded steel construction. Powder coat finish. Shipped assembled.

BV4S 361872-00	36"W X 18"D X 72"H
----------------	--------------------

F.O.B. California and Tennessee - sliding doors only.

01 02 04 05 06 07 08 09 22 MG

SPECIAL ORDER
COLORS AVAILABLE



Mobile Storage For Material Handling, Schools - Commercial - Industrial

Heavy gauge steel (20/22 gauge). Welded steel construction. 230 lbs. capacity per shelf evenly distributed. Powder coat finish. Shipped assembled (•). Optional side handle available. Heavy duty caster base. Three Point Locking System on all double door cabinets, Cam Lock on Single doors.

A. Transport Mobile Storage with 4 adjustable shelves

B.	TA3R 362460-00*	36"W X 24"D X 66"H
	TA4R 362472-00	36"W X 24"D X 78"H
	TA4R 462472-00	46"W X 24"D X 78"H

* Three adjustable shelves.

Height includes 6" for casters.



C. Transport Mobile Wardrobe with wardrobe bar

Full width adjustable shelf with wardrobe bar.

TAWR 362472-00	36"W X 24"D X 78"H
TAWR 462472-00	46"W X 24"D X 78"H

Height includes 6" for casters.

D. Transport Mobile Combination with sectioned interior

Full top shelf and three adjustable side shelves, plus bottom. Open section has wardrobe bar. Interior requires assembly (•).

TACR 362460-00*	36"W X 24"D X 66"H
TACR 362472-00	36"W X 24"D X 78"H

* No top shelf.

Height includes 6" for casters.



E. Transport Work Height Storage with adjustable shelves

Large capacity, two adjustable shelves plus bottom shelf.

TA2R 462442-00	46"W X 24"D X 48"H
----------------	--------------------

Height includes 6" for casters.

F. Transport Work Height Storage with adjustable shelves

Full adjustable shelf plus bottom shelf. Swing handle with cam lock on single door model; three point lock on double door model (not shown).

TA11 182430-00	18"W X 24"D X 36"H
TA11 361830-00	36"W X 18"D X 36"H
TA11 362430-00	36"W X 24"D X 36"H
TA21 362442-00	36"W X 24"D X 48"H

Height includes 6" for casters.



G. Side Handle For Transports

Attaches to either side using bolts/nuts provided. Additional backer support plate attaches to the inside for maximum support. Holes must be drilled in cabinet to attach handle. Order to match your cabinet color.

TSH-00	23"W X 4½"D X 5"H
--------	-------------------



ELITE SERIES SEE-THRU



A



B



C



D



E



F



Expanded Metal Front

A. Clear View Storage Cabinet

Durable acrylic doors provide full visibility of contents. Fully adjustable shelves on 2" centers plus raised bottom shelf. Three point door locking system. Meets ANSI/BIFMA shelf standards, 200 lbs. capacity per shelf evenly distributed (46" 230 lbs.). Powder coat finish. Shipped assembled (•).

CA4V	361272-00	36"W X 12"D X 72"H
CA4V	361872-00	36"W X 18"D X 72"H
CA4V	362472-00	36"W X 24"D X 72"H
EA4V	362478-00	36"W X 24"D X 78"H
EA4V	461872-00	46"W X 18"D X 72"H
EA4V	462472-00	46"W X 24"D X 72"H
EA4V	462478-00	46"W X 24"D X 78"H

B. Clear View Counter Height Cabinet

Durable acrylic doors provide full visibility of contents. Fully adjustable shelves on 2" centers plus raised bottom shelf. Three point door locking system. Meets ANSI/BIFMA shelf standards, 200 lbs. capacity per shelf evenly distributed (46" 230 lbs.). Powder coat finish. Shipped assembled (•).

CA2V	361842-00	36"W X 18"D X 42"H
CA2V	362442-00	36"W X 24"D X 42"H
EA2V	462442-00	46"W X 24"D X 42"H

C. Transport Mobile Clear View Cabinet

Durable acrylic doors provide full visibility of contents. Fully adjustable shelves on 2" centers plus raised bottom shelf. Three point door locking system. Meets ANSI/BIFMA shelf standards, 200 lbs. capacity per shelf evenly distributed (46" 230 lbs.). Heavy-duty caster base. Powder coat finish. Shipped assembled (•).

TA4V	361872-00	36"W X 18"D X 78"H
TA4V	362472-00	36"W X 24"D X 78"H
TA4V	462472-00	46"W X 24"D X 78"H

Height includes 6" for casters.

D. Transport Mobile Clear View Counter Height

Durable acrylic doors provide full visibility of contents. Fully adjustable shelves on 2" centers plus raised bottom shelf. Three point door locking system. Meets ANSI/BIFMA shelf standards, 200 lbs. capacity per shelf evenly distributed (46" 230 lbs.). Heavy-duty caster base. Powder coat finish. Shipped assembled (•).

TA2V	361842-00	36"W X 18"D X 48"H
TA2V	362442-00	36"W X 24"D X 48"H
TA2V	462442-00	46"W X 24"D X 48"H

Height includes 6" for casters.

E. Expanded Metal Front Stationary Cabinet

See-thru, ventilated, heavy gauge expanded metal front doors. Doors are 22 gauge. Four fully adjustable shelves on 2" centers, plus raised bottom shelf. Three point door locking system. Meets ANSI/BIFMA shelf standards, 200 lbs. capacity per shelf evenly distributed (46" 230 lbs.). Powder coat finish. Shipped assembled (•).

CA4M	362472-00	36"W X 24"D X 72"H
EA4M	462472-00	46"W X 24"D X 72"H

F.O.B. Tennessee only.

F. Expanded Metal Front Transport Mobile Cabinet

See-thru, ventilated, heavy gauge expanded metal front doors. Doors are 22 gauge. Four fully adjustable shelves on 2" centers, plus raised bottom shelf. Three point door locking system. Meets ANSI/BIFMA shelf standards, 200 lbs. capacity per shelf evenly distributed (46" 230 lbs.). Shipped assembled (handles/lock require some assembly). Optional side handle available for ease in navigating. Height includes 6" for casters. Powder coat finish.

TA4M	362472-00	36"W X 24"D X 78"H
TA4M	462472-00	46"W X 24"D X 78"H

F.O.B. Tennessee only.

Height includes 6" for casters.



SPECIAL ORDER
COLORS AVAILABLE

• Handle/lock require some assembly.



CLASSIC SERIES STORAGE

A. Storage Cabinets with adjustable shelves

Four fully adjustable shelves on 2" centers, plus raised bottom shelf, three point door lock system, three sets of hinges per door. Meets ANSI/BIFMA shelf standards, 180 lbs. capacity per shelf evenly distributed. Welded steel construction. Powder coat finish. Shipped assembled (•).

CA41	361872-00	36"W X 18"D X 72"H
CA41	361878-00	36"W X 18"D X 78"H
CA41	362472-00	36"W X 24"D X 72"H
CA41	362478-00	36"W X 24"D X 78"H

B. Counter Height Cabinet with adjustable shelves

Two fully adjustable shelves on 2" centers, plus raised bottom shelf, three point door lock system. Meets ANSI/BIFMA shelf standards, 180 lbs. capacity per shelf evenly distributed. Welded steel construction. Powder coat finish. Shipped assembled (•).

CA21	361842-00	36"W X 18"D X 42"H
CA21	362442-00	36"W X 24"D X 42"H

C. Combination Cabinets with adjustable shelves

Combination cabinet interior includes a full width top shelf, three adjustable side shelves, and a garment rod. Meets ANSI/BIFMA shelf standards, 180 lbs. capacity per shelf evenly distributed. Powder coat finish. Interior requires assembly (•).

CAC1	361872-00	36"W X 18"D X 72"H
CAC1	362472-00	36"W X 24"D X 72"H

D. Wardrobe Cabinets with adjustable shelf

Wardrobe cabinet interior includes a full width shelf and garment rod. Meets ANSI/BIFMA shelf standards, 180 lbs. capacity per shelf evenly distributed. Powder coat finish. Interior requires assembly (•).

CAW1	362472-00	36"W X 24"D X 72"H
CAW1	362478-00	36"W X 24"D X 78"H



• Handle and locks require some assembly.

02 04 05 07 09



SYSTEM SERIES



A



B



C



D



E



A. Single Door Wardrobe with file drawer

Full recessed pull, with cam lock. One adjustable shelf with wardrobe bar. Full suspension file drawer. Meets ANSI/BIFMA shelf standards, 200 lbs. capacity per shelf evenly distributed.

HAWF 171864-00	17"W X 18"D X 64"H
----------------	--------------------

B. Single Door Storage with file drawer

Full recessed pull, with cam lock. Three adjustable shelves. Full suspension file drawer. Meets ANSI/BIFMA shelf standards, 200 lbs. capacity per shelf evenly distributed.

HADF 171864-00	17"W X 18"D X 64"H
----------------	--------------------

C. Storage Cabinet with file drawer

Full recessed pull, with recessed push button handle. Two adjustable shelves and one center fixed shelf, plus bottom shelf. Full suspension file drawer. Meets ANSI/BIFMA shelf standards, 200 lbs. capacity per shelf evenly distributed.

HADF 301864-00	30"W X 18"D X 64"H
HFDF 301842-00*	30"W X 18"D X 42"H

* 1 Fixed Shelf

D. Double Door Storage with adjustable shelves

Full recessed pull, with recessed push button handle. Two adjustable shelves and one center fixed shelf, plus bottom shelf. Meets ANSI/BIFMA shelf standards, 200 lbs. capacity per shelf evenly distributed.

HF2F 301842-00*	30"W X 18"D X 42"H
HA3F 301864-00	30"W X 18"D X 64"H
HA3F 361864-00	36"W X 18"D X 64"H

* 2 Fixed Shelves



Push Button
Recessed Handle

E. Bookcases with File Drawer 18" depths

Full suspension locking file drawer holds letter or legal hanging files. Shelves adjust on 1" centers. Full width pull handle. Powder coat finish. Shipped assembled. Meets ANSI/BIFMA shelf standards, 200 lbs. capacity per shelf evenly distributed.

BD10 361842-00 one shelf and bottom shelf	36"W X 18"D X 42"H
BD30 361872-00 three shelves and bottom shelf	36"W X 18"D X 72"H

01 02 04 05 06 07 08 09 22 MG

SPECIAL ORDER
COLORS AVAILABLE



STAINLESS STEEL CABINETS

Stainless Steel Storage Cabinets

Constructed of heavy 18 gauge type 304 stainless steel. These cabinets resist acid, corrosion and rust. Ideal for wash-down and cleanroom environments. Shelves adjust in 2" increments, 500 lbs. capacity per shelf. Recessed paddle lock handle. Full piano hinges. Fully welded assembled cabinets.

SA1D 301230-XX	30"W X 12"D X 30"H	WALL CABINET WITH PADDLE LOCK
SA2D 361842-XX	36"W X 18"D X 42"H	CABINET WITH PADDLE LOCK
SA4D 361872-XX	36"W X 18"D X 72"H	CABINET WITH PADDLE LOCK
SA4D 362478-XX	36"W X 24"D X 78"H	CABINET WITH PADDLE LOCK
SA4D 482478-XX	47"W X 24"D X 78"H	CABINET WITH PADDLE LOCK
SA4V 361872-XX*	36"W X 18"D X 72"H	CLEAR VIEW CABINET WITH SWING HANDLE LOCK
SA4V 482478-XX*	47"W X 24"D X 78"H	CLEAR VIEW CABINET WITH SWING HANDLE LOCK



Paddle Lock



Leg Levelers



Steel Legs (Optional)
Use "L" after "XX" code

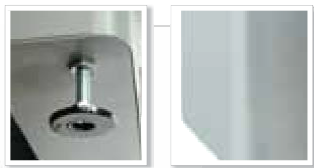
* Clear View Cabinet available with swing handle only

All products on this page F.O.B. Tennessee only.



(Shown With Optional Legs)

ELITE SERIES WELDED BOOKCASE



Leg Levelers

Radius Profile

Bookcases

12" and 18" depths

Fully adjustable shelves adjust on 1" centers plus raised bottom shelf. Welded steel construction. Shelf depth is 12½" on 13" deep series. Meets ANSI/BIFMA shelf standards, 200 lbs. capacity per shelf evenly distributed. Powder coat finish. Shipped assembled.

BA10 341230-00 one shelf and bottom shelf	34½"W X 12½"D X 30"H
BA20 341242-00 two shelves and bottom shelf	34½"W X 12½"D X 42"H
BA30 341252-00 three shelves and bottom shelf	34½"W X 12½"D X 52"H
BA30 341260-00 three shelves and bottom shelf	34½"W X 12½"D X 60"H
BA40 341272-00 four shelves and bottom shelf	34½"W X 12½"D X 72"H
BA50 341282-00 five shelves and bottom shelf	34½"W X 12½"D X 82"H

BA10 361830-00 one shelf and bottom shelf	36"W X 18"D X 30"H
BA20 361842-00 two shelves and bottom shelf	36"W X 18"D X 42"H
» BA20 461842-00 two shelves and bottom shelf	46"W X 18"D X 42"H
BA30 361852-00 three shelves and bottom shelf	36"W X 18"D X 52"H
BA40 361872-00 four shelves and bottom shelf	36"W X 18"D X 72"H
» BA40 461872-00 four shelves and bottom shelf	46"W X 18"D X 72"H
BA50 361884-00 five shelves and bottom shelf	36"W X 18"D X 84"H

» Extra Large Capacity

Mobile Bookcases

18" depths

Fully adjustable shelves adjust on 1" centers plus raised bottom shelf. Welded steel construction. Heavy-duty caster base, 2 locking. Shipped assembled except for casters.

BM10 361830-00 one shelf and bottom shelf	36"W X 18"D X 36"H
BM20 361842-00 two shelves and bottom shelf	36"W X 18"D X 48"H
BM30 361852-00 three shelves and bottom shelf	36"W X 18"D X 58"H
BM40 361872-00 four shelves and bottom shelf	36"W X 18"D X 78"H

Height includes 6" casters

Radius Edge Stationary Bookcases

Fully adjustable shelves adjust on 1" centers plus raised bottom shelf. Leg levelers. Welded steel construction. Powder coat finish. Shipped assembled.

BA1R 361830-00 one shelf and bottom shelf	36"W X 18"D X 30"H
BA2R 361842-00 two shelves and bottom shelf	36"W X 18"D X 42"H
BA3R 361852-00 three shelves and bottom shelf	36"W X 18"D X 52"H
BA4R 361872-00 four shelves and bottom shelf	36"W X 18"D X 72"H

WALL CABINETS

Clear View Wall Cabinet

Durable acrylic doors provide full visibility of contents. Fully adjustable shelf on 2" centers plus raised bottom shelf. Three point door locking system. Single door has a cam lock to the side. Meets ANSI/BIFMA shelf standards. Shipped assembled (•).

WA1V 161226-00*	16"W X 12"D X 26"H
WA1V 301226-00	30"W X 12"D X 26"H
WA2V 361230-00	36"W X 12"D X 30"H**

* Single door design

** 36"W has two shelves and two handles

• Handle requires some assembly.



Solid Door Wall Cabinet

Fully adjustable shelf on 2" centers plus raised bottom shelf. Three point door locking system. Single door has a cam lock to the side. Meets ANSI/BIFMA shelf standards. Shipped assembled (•).

WA11 181226-00*	18"W X 12"D X 26"H
WA11 301230-00	30"W X 12"D X 30"H
WA22 361230-00	36"W X 12"D X 30"H**

* Single door design

** 36"W has two shelves and two handles

• Handle requires some assembly.



Wall Cabinet, All Welded w/Keyless Electronic Handle

Fully adjustable shelf on 2" centers plus raised bottom shelf. Keyless electronic coded lock system. Two passwords that can be changed. Keypad also keeps a record of day, date and time of cabinet access. Powder coat finish (ships assembled).

WA1E301230-00	30"W X 12"D X 30"H
---------------	--------------------



SPECIAL ORDER
COLORS AVAILABLE



PULL-OUT TRAY / EXTRA HEAVY-DUTY CABINETS

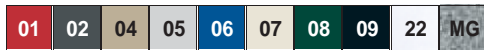


Pull-Out Tray Shelves

Convenient pull-out shelves on full extension ball-bearing slides. Tray design shelves (1 1/4" side/back lip, 5/8" front lip) hold 200 lbs. each and have a built-in interlock system to prevent more than one shelf from opening at a time to avoid tipping. Three point locking handle/keys secure the contents. Four leg levelers to keep cabinet level on uneven surface. Powder coat finish.

ET52362466-00LL 36"W X 24"D X 66"H

F.O.B. California and Pennsylvania only.



SPECIAL ORDER
COLORS AVAILABLE



Extra Heavy-Duty Storage Cabinets

All welded 16 gauge steel construction. Superior strength and security. Paddle style handle with three point lock system with key lock (keys included). Four heavy 16 gauge shelves adjust on 2" centers and support 1,000 lbs. evenly dispersed. Strong steel legs raise the cabinet 7" off the floor. Full piano hinge. Powder coat finish.

XA4D361872-00L	36"W X 18"D X 79"H
XA4D362472-00L	36"W X 24"D X 79"H
XA4D461872-00L	46"W X 18"D X 79"H
XA4D462472-00L	46"W X 24"D X 79"H

Height includes 7" for legs.

F.O.B. Tennessee only.



SPECIAL ORDER
COLORS AVAILABLE



WORK BENCHES



Bamboo Top, Adjustable Height Work Bench

Heavy Duty work bench with a 1.5" thick Bamboo Top with a 2000 lb. capacity. The bench adjusts from 28"H to 42"H. and leg levelers included. Equipped with a convenient 60"L x 4"W x 1.5"H tool tray that includes a versatile tablet stand that can also accommodate a phone. Handy 6 plug electric outlet can be located on front or sides. Requires assembly.

WB602436	60"W X 24"D X 36"H
WB722436	72"W X 24"D X 36"H
WB902436	90"W X 24"D X 36"H



Rubber Wood Top, Work Bench

WB6020-RW Heavy Duty steel frame and legs provide a strong foundation that won't slip. 300 lb. capacity. Rubber Wood top 66"x20".

WB6620-RW	66"W X 20"D X 38"H
-----------	--------------------

F.O.B. Illinois only.

AMERICAN HERITAGE SERIES STORAGE SYSTEM



American Heritage Series Storage System

Modular designed to custom configure any workspace. Durable all welded steel construction with radius front corners. Durable powder coat finish for lasting protection and beauty (3 color options). Easy-to-grab full length door pulls for easy opening and closing. Full length piano hinges to ensure door strength and rigidity. Cam lock with three point locking system to keep items secure. Heavy duty rounded legs with leveling guides to keep cabinets evenly leveled. 200 lb. capacity shelves; wall cabinet has 150 lb. capacity shelves. Cut-out access holes in back of cabinets allow cords through for charging tools and electronics when cabinet is locked and secure. Drawer fully extends on ball-bearing slides for smooth operation. Industrial shop tops are sealed and have a radius top and bottom front edge.

A.	AW1F301226*	30"W X 12"D X 26"H	WALL CABINET	1 ADJUSTABLE
B.	AADF301836*	30"W X 18"D X 36"H	BASE CABINET W/DRAWER	1 ADJUSTABLE
C.	AA2F301836*	30"W X 18"D X 36"H	BASE CABINET	2 ADJUSTABLE
D.	AA3F241872*	24"W X 18"D X 72"H	SINGLE DOOR CABINET	3 ADJUSTABLE
E.	AA3F361872*	36"W X 18"D X 72"H	DOUBLE DOOR STORAGE CABINET	1 FIXED/2 ADJUSTABLE
F.	AA3F462472*	46"W X 24"D X 72"H	JUMBO STORAGE CABINET	1 FIXED/2 ADJUSTABLE
	TP6018	60"W X 18"D X 1½"H	INDUSTRIAL SHOP WORK TOP	---
	TP9018	90"W X 18"D X 1½"H	INDUSTRIAL SHOP WORK TOP	---



Fully lockable for secure storage



Easy adjustable shelves



Heavy Duty adjustable legs



Full extension ball-bearing drawer slides



Cut-out hole for cord access



White Frame / Charcoal Doors
0222

Black Frame / Multi-Granite Doors
MG09

Black Frame / Black Doors
0909

* Specify color



A



B



C



D



E



F



VALUE LINE SERIES WITH FIXED SHELVES



A



B



C



D

05 07 09

A. Storage Cabinet with fixed shelves

Extra tall (72") and three fixed shelves allowing extra space between shelves for taller objects. Locking cam handle. Powder coat finish. Meets ANSI/BIFMA shelf standards, 150 lbs. capacity per shelf evenly distributed. Shipped assembled (•).

VF31301872-00	30"W X 18"D X 72"H
---------------	--------------------

B. Storage Cabinet with fixed shelves

Three fixed shelves. Cam locking handle. Powder coat finish. Meets ANSI/BIFMA shelf standards, 150 lbs. capacity per shelf evenly distributed. Shipped assembled (•).

VF31301566-00	30"W X 15"D X 66"H
---------------	--------------------

C. Storage Cabinet with fixed shelves

Four fixed shelves. Powder coat finish. Meets ANSI/BIFMA shelf standards, 150 lbs. capacity per shelf evenly distributed. Shipped assembled (•).

VF41361872-00	36"W X 18"D X 72"H
---------------	--------------------

D. Counter Height Cabinet with fixed shelves

Convenient counter height. Cam locking handles. Two fixed shelves, plus flat bottom shelf construction. Welded steel construction. Powder coat finish. Meets ANSI/BIFMA shelf standards, 150 lbs. capacity per shelf evenly distributed. Shipped assembled (•).

VF21 361842-00	36"W X 18"D X 42"H
----------------	--------------------

• Handle requires some assembly.



JANITORIAL SUPPLY



Janitorial Supply Cabinet

Three storage shelf spaces 20"W x 14"D x 12"H. Organize building maintenance and cleaning supplies. Storage for brooms, mops, vacuum cleaners, etc. Locking handle for increased safety and security. Powder coat finish. Shipped assembled (•).

VFC1 301566-00	30"W X 15"D X 66"H
----------------	--------------------

Three storage shelf spaces 20"W x 14"D x 12"H.

EFC1 362472-00	36"W X 24"D X 72"H
----------------	--------------------

Three storage shelf spaces 20"W x 23"D x 17"H.

• Handle requires some assembly.

02 05 06 07 09 22



WELDED LOCKERS



Single-Tier
24"H

Single-Tier
48"H

Single-Tier
66"H

Double-Tier

Triple-Tier

Five-Tier

Welded Steel Colored Lockers

These designer steel lockers are built to last and feature cool colors that kids and teens will love. Great for storing school supplies, books, backpacks, clothes, shoes, and much more. All lockers are Greenguard Certified. Durable welded steel construction with powder coat finish. Louvered vents on doors for proper air ventilation. Recessed handle with finger-lift latch; 5-tier has friction catch door pull with steel hasp; all lockers accommodate a padlock (not included). All lockers include a number plate for each door; additional number plate sets can be ordered. Single tier 48" and 66"H locker includes top shelf, two side hooks and center hook; single tier 24"H, double and triple tier lockers include two side hooks per opening. 24"H can be stacked on top of one another or single stacked on top of 48"H locker. Shipped assembled (except for hooks, and number plate).



New Recessed
Handle



New Steel Hasp

SINGLE TIER LF1B151524-00	15"W X 15"D X 24"H	24" HIGH COMPARTMENT	2.7 UNIT CUBE	APPROX. UNIT WEIGHT 20 LBS.
SINGLE TIER LF1B151548-00	15"W X 15"D X 48"H	48" HIGH COMPARTMENT	5.0 UNIT CUBE	APPROX. UNIT WEIGHT 36 LBS.
SINGLE TIER LF1B151866-00	15"W X 18"D X 66"H	66" HIGH COMPARTMENT	10.3 UNIT CUBE	APPROX. UNIT WEIGHT 48 LBS.
DOUBLE TIER LF2B151866-00	15"W X 18"D X 66"H	30" HIGH COMPARTMENT	10.3 UNIT CUBE	APPROX. UNIT WEIGHT 55 LBS.
TRIPLE TIER LF3B151866-00	15"W X 18"D X 66"H	19" HIGH COMPARTMENT	10.3 UNIT CUBE	APPROX. UNIT WEIGHT 57 LBS.
FIVE TIER LF5H151866-00	15"W X 18"D X 66"H	11" HIGH COMPARTMENT	10.3 UNIT CUBE	APPROX. UNIT WEIGHT 60 LBS.



CUBBY STORAGE ORGANIZER

A. Cubby Storage Organizer

Heavy-duty, 18 gauge, welded steel construction Cubby Cabinet available with 9 or 12 storage sections. Ideal for visual organization. Easy opening is 14½"W X 17½"D X 15"H. Powder coat finish. Greenguard Certified. 75 lbs. capacity per compartment.

IC00461852-00	46"W X 18"D X 52"H	9 SECTIONS
IC00461866-00	46"W X 18"D X 66"H	12 SECTIONS

B. Open Front Kids Locker

Durable 16 gauge welded steel construction for lasting use. Three 11.9" wide open locker sections to store individual personal items. Each locker section includes a top shelf, double-prong center hook and two side hooks. Two convenient wall-mount holes for mounting unit to wall for added safety (hardware not included). Durable powder coat finish available in 14 colors.

IC30361248-00	36"W X 12"D X 48"H
---------------	--------------------

F.O.B. California and Pennsylvania only.



Kid Bin Organization

Compact four level bin organizer. 12 multi color bins: 4 large bins measure 16½" x 11½" x 5¼", 8 small bins 8½" x 11½" x 5¼". Bins are safe for kids and BPA free. Two color versions – bright and pastel. Laminate side panels make for easy cleaning. Side handles for easy carrying. KD – Easy assembly.

C.	KBO-341030BC	34"W X 10½"D X 30¼"H	BRIGHT
D.	KBO-341030PC	34"W X 10½"D X 30¼"H	PASTEL

F.O.B. Illinois only.

Toy and Book Organizer

This book and toy organizer features a fun and functional design. It has a large storage capacity in an easy to see and access system. This kids' bin organizer stores the books with the covers facing forward, making them easy to recognize. It is made from a strong MDF construction with a natural finish. This item comes with four regular size bins and two double size bins. It also has three fabric pockets for extra storage.

E.	KTO341031-BC	33.8"W X 10.4"D X 30.7"H	BRIGHT
-----------	--------------	--------------------------	--------

F.O.B. Illinois only.

5-Tier Book Organizer

Sturdy engineered wood construction is easy to assemble and clean. Five deep, fabric sling sleeves hold books of almost any size. Space-saving design, perfect for book storage in your toddler's bedroom, playroom, nursery, or the living room.

F.	KBO251124-BC	24.6"W X 11"D X 23.6"H	BRIGHT
-----------	--------------	------------------------	--------

Ergonomic Adjustable Kid's Desk

Pure ABS material table top and chair set. Multi-Angle desktop meets different learning needs. Slide out tray for small accessories. Different level height adjustment for your kids' needs.

G.	ECD-PINK	25.7"W X 17.7"D X 21.4"H (LEVEL) / 30.9" H (ELEVATED)	PINK
H.	ECD-BLUE	25.7"W X 17.7"D X 21.4"H (LEVEL) / 30.9" H (ELEVATED)	BLUE

F.O.B. Illinois only.

KID'S FURNITURE



LATERAL FILES / MOBILE LATERAL FILES



A

A. 400 Series Lateral File Cabinets

E202L	2 DRAWER	30"W X 18"D X 26 $\frac{3}{8}$ "H
E204L	4 DRAWER	30"W X 18"D X 50 $\frac{3}{8}$ "H

30" wide 80 lbs. drawer capacity

F.O.B. California and Pennsylvania only.

B. 600 Series Lateral File Cabinets

LF6A362-00	2 DRAWER	36"W X 19 $\frac{1}{4}$ "D X 28 $\frac{3}{8}$ "H
LF6A363-00	3 DRAWER	36"W X 19 $\frac{1}{4}$ "D X 40 $\frac{3}{8}$ "H
LF6A423-00	3 DRAWER	42"W X 19 $\frac{1}{4}$ "D X 40 $\frac{3}{8}$ "H
LF6A364-00	4 DRAWER	36"W X 19 $\frac{1}{4}$ "D X 53 $\frac{1}{4}$ "H
LF6A424-00	4 DRAWER	42"W X 19 $\frac{1}{4}$ "D X 53 $\frac{1}{4}$ "H
LF6A365-00	5 DRAWER*	36"W X 19 $\frac{1}{4}$ "D X 66 $\frac{3}{8}$ "H
LF6A425-00	5 DRAWER*	42"W X 19 $\frac{1}{4}$ "D X 66 $\frac{3}{8}$ "H

36" wide 100 lbs. drawer capacity

F.O.B. California and Pennsylvania only.

42" wide 120 lbs. drawer capacity

*5 drawer has posting shelf, flip front top drawer.



B

C. 800 Series Full Pull Lateral Files

LF8F302-00	2 DRAWER	30"W X 19 $\frac{1}{4}$ "D X 28 $\frac{3}{8}$ "H
LF8F304-00	4 DRAWER	30"W X 19 $\frac{1}{4}$ "D X 53 $\frac{1}{4}$ "H
LF8F362-00	2 DRAWER	36"W X 19 $\frac{1}{4}$ "D X 28 $\frac{3}{8}$ "H
LF8F364-00	4 DRAWER	36"W X 19 $\frac{1}{4}$ "D X 53 $\frac{1}{4}$ "H
LF8F422-00	2 DRAWER	42"W X 19 $\frac{1}{4}$ "D X 28 $\frac{3}{8}$ "H
LF8F424-00	4 DRAWER	42"W X 19 $\frac{1}{4}$ "D X 53 $\frac{1}{4}$ "H
LF8F425-00	5 DRAWER*	42"W X 19 $\frac{1}{4}$ "D X 66 $\frac{3}{8}$ "H

36" wide 100 lbs. drawer capacity

F.O.B. California and Pennsylvania only.

42" wide 120 lbs. drawer capacity

*5 drawer has posting shelf, flip front top drawer.



C

D. Optional Caster Base

D. Optional Caster Base (Make Your Lateral Files Mobile)

Non-marring, 3" soft rubber casters.

FCB3619-09	36"W
FCB4219-09	42"W



Cross Bar Kit
Four Rails Per Set LA99000
(Optional)



File Drawer Divider Kit
LFDIVKT-10
Black Only
(Optional)

	400	600	800
Full drawer extension on genuine progressive telescoping ball-bearing slides provide smooth, trouble-free operation.	■	■	■
Built-in drawer interlock system prevents more than one drawer from opening at a time, reducing the chance of cabinet tip over.	■	■	■
Single lock system secures all drawers with one key (two keys included).	■		
Center lock securely locks both sides of each drawer for positive security (two keys provided).		■	■
Adjustable leg levelers keep cabinets level in any environment.	■	■	■
Extra deep drawer accommodates letter or legal size files using side-to-side hanging rails.	■	■	■
Cross Bar Kits available for front-to-back filing.	■	■	■
File Drawer Divider Kits.		■	■
Powder coat finish.	■	■	■
Aluminum handles with steel reinforced drawer fronts.		■	
Plastic handle insert.	■		
Rolled or hemmed edge drawer sides for strength, rigidity & safety.	■	■	■
ANSI/BIFMA Rated. 36"W @ 88 lbs. 42"W @ 113 lbs.		■	■
All steel full width drawer pulls featuring double wall reinforced drawer fronts for extra stability.			■
Core removeable locks.		■	■
Available in all colors.	■	■	■

01 02 04 05 06 07 08 09 22 MG

SPECIAL ORDER
COLORS AVAILABLE



SAFETY CABINETS



A. Compact Flammable Safety Cabinet with Single Door - Manual Close

Construction meets NFPA Code 30 and OSHA Standard 1910.106 for storage of Class I, II and III liquids. Fits conveniently under countertops, fume hoods, windows or other compact areas. Cabinets include one 500 lbs. capacity galvanized shelf adjustable on 2½" centers.

SWH12-P	GAL. CAPACITY 12	23"W X 18"D X 35"H
SWH16-P	GAL. CAPACITY 16	23"W X 18"D X 44"H
SWH24-P	GAL. CAPACITY 24	43"W X 12"D X 44"H

B. Compact Flammable Safety Cabinet with Double Door - Manual Close

Construction meets NFPA Code 30 and OSHA Standard 1910.106 for storage of Class I, II and III liquids. Fits conveniently under countertops, fume hoods, windows or other compact areas. Cabinets include one 500 lbs. capacity galvanized shelf adjustable on 2½" centers.

SC22F-P	GAL. CAPACITY 22	35"W X 22"D X 35"H
---------	------------------	--------------------

C. Flammable Safety Cabinet

Standard 2-door manual close design. Double wall 18 gauge welded steel construction with 1½" air space. Dual 2" capped vents with flash arrestors for external exhaust. 2" high leakproof door sill contains spills. Adjustable leveling feet. Locking handle with 3-point latch. Cabinet includes two 500 lbs. capacity galvanized shelves, adjustable on 2½" centers. Construction meets NFPA Code 30 and OSHA Standard 1910.106 for storage of Class I, II and III liquids. Factory Mutual Approved.

SC450F-P	GAL. CAPACITY 45	43"W X 18"D X 65"H
SC600F-P	GAL. CAPACITY 60	34"W X 34"D X 65"H

D. Counter Height Flammable Safety Cabinet

Same features as Flammable Safety Cabinet except it has one adjustable shelf.

SC300F-P	GAL. CAPACITY 30	43"W X 18"D X 44"H
----------	------------------	--------------------

E. Paint & Ink Storage Cabinet

Double wall 18 gauge welded steel construction with 1½" air space. Dual 2" capped vents with flash arrestors for external exhaust. 2" high leakproof door sill contains spills. Adjustable leveling feet. Locking handle with 3-point latch. Cabinet includes five 500 lbs. capacity galvanized shelves, adjustable on 2½" centers. Construction meets NFPA Code 30 and OSHA Standard 1910.106 for storage of Class I, II and III liquids.

PC60-P	GAL. CAPACITY 60	43"W X 18"D X 65"H
--------	------------------	--------------------

F. Counter Height Paint & Ink Storage Cabinet

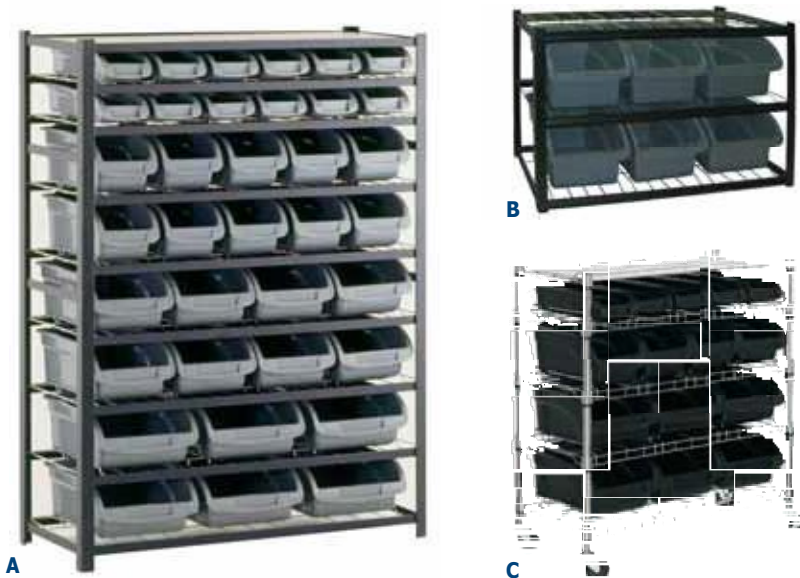
Same features as Paint & Ink Storage Cabinet except it has three adjustable shelves.

PC40-P	GAL. CAPACITY 40	43"W X 18"D X 44"H
--------	------------------	--------------------



All products on this page are F.O.B. Illinois only.

BIN STORAGE



A

B

C

F.O.B. Illinois only.

A. Bin Shelving

36 gray plastic bins in four sizes. Bins have space for labels. Black powder coat steel frame. Wire shelves with rails to keep bins in place. Top laminate shelf for extra storage space. Easy to assemble. Twelve small plastic bins, 5.9"W X 15.4"D X 3.5"H. Ten medium plastic bins, 7.5"W X 15.4"D X 6.6"H. Eight large plastic bins, 10"W X 15.4"D X 6.6"H. Six extra-large plastic bins, 12.4"W X 15.4"D X 6.6"H.

UR4416BIN36	44"W X 16"D X 57"H
-------------	--------------------

B. Bin Shelving

6 extra large gray plastic bins. Black powder coat steel frame. Wire shelves with rails to keep bins in place. Top wire shelf for extra storage space. Easy to assemble. Six plastic bins, 12.25"W X 14.5"D X 12.25"H.

IBU421633	42"W X 16"D X 33"H
-----------	--------------------

C. Mobile Bin Shelving

15 black plastic bins in three sizes. Wire shelves with rails to keep bins in place. Top wire shelf has plastic liner. Heavy-duty swivel casters, two locking. Chrome finish. Five small plastic bins, 5.5"W X 15.25"D X 3.25"H. Four medium plastic bins, 7.5"W X 15.25"D X 6.25"H. Six large plastic bins, 10"W X 15.25"D X 6.25"H.

MBU3317BIN15	33"W X 16½"D X 38"H
--------------	---------------------

PLASTIC SHELVING

Plastic Shelving

Durable, ventilated resin shelving will never rust, dent or peel and is chemical resistant. Suitable for indoor and outdoor use. Easy to assemble in minutes – no tools required. Color black.

PS4361856-BBBX	36"W X 18"D X 56"H	4 SHELVES	150 LBS. SHELF CAPACITY
PS4362456-BBBX	36"W X 24"D X 56"H	4 SHELVES	150 LBS. SHELF CAPACITY
PS5361872-BBBX	36"W X 18"D X 72"H	5 SHELVES	150 LBS. SHELF CAPACITY
PS5362472-BBBX	36"W X 24"D X 72"H	5 SHELVES	200 LBS. SHELF CAPACITY



CRATE / TOTES / STORAGE TOWER



Milk Crate

Heavy-duty construction storage crate stores all kinds of small and medium items, making it ideal for all your home and garage storage needs. Made from high-density polyethylene plastic, making it perfect for indoor and outdoor storage. Easily stackable and very durable.

PMC16QTBK-02BX	13"W X 13"D X 11"H	2 PACK
----------------	--------------------	--------



Tote

Constructed of heavy-duty plastic. Sturdy handles for easy transport. Features snap on, secure carry lid.

PT5GSLBY-04BX	16"W X 8¾"D X 12¼"H	YELLOW	5 GAL.	4-PK
PT23GSLBY-04BX	25¾"W X 16"D X 17½"H	YELLOW	23 GAL.	4-PK
PT23GSLBB-04BX	25¾"W X 16"D X 17½"H	BLUE	23 GAL.	4-PK
PT23GSLBR-04BX	25¾"W X 16"D X 17½"H	RED	23 GAL.	4-PK



Storage Tower

Durable all-plastic frame and drawers will not rust, chip or peel. Three virtually unbreakable pull-out clear drawers to neatly store away items such as art and office supplies, tools, toys, and much more.

PDT3-BCBX	15.5"W X 13.5"D X 18.3"H	3-DRAWER	1-PK
PDT4-BCBX	24"W X 15"D X 20"H	4-DRAWER	1-PK
PDT5-BCBX	24"W X 15"D X 25"H	5-DRAWER	1-PK

MUSCLE RACK INDUSTRIAL STEEL SHELVING

Z-Beam Boltless Steel Shelving with Particleboard Shelves

Industrial grade steel construction with durable silver vein finish. Z-Beam design beams for strength and rigidity. Five shelves with particleboard decking can be adjusted in 1½" increments. Includes a pot coupler to make assembly faster and easier, no nuts or bolts. Can be assembled vertically as a shelving unit or horizontally as a workbench.

UR361860PB4P-SV	36"W X 18"D X 60"H	4 SHELVES	800 LBS. SHELF CAPACITY
UR301260PB5P-SV	30"W X 12"D X 60"H	5 SHELVES	800 LBS. SHELF CAPACITY
UR361872PB5P-SV	36"W X 18"D X 72"H	5 SHELVES	800 LBS. SHELF CAPACITY
UR481872PB5P-SV	48"W X 18"D X 72"H	5 SHELVES	800 LBS. SHELF CAPACITY
UR482472PB5P-SV	48"W X 24"D X 72"H	5 SHELVES	800 LBS. SHELF CAPACITY



Z-Beam Boltless Steel Shelving with Laminate Shelves

Industrial grade steel construction with durable silver vein finish. Z-Beam design beams for strength and rigidity. Five shelves with black laminate board decking can be adjusted in 1½" increments. Laminate shelves resist moisture and are easy to clean. Smooth post design conceals assembly. Assembles in minutes with no nuts or bolts as a vertical shelving unit or horizontal as a workbench.

ZRHP4824SVL5P	48"W X 24"D X 72"H	5 SHELVES	800 LBS. SHELF CAPACITY
---------------	--------------------	-----------	-------------------------



Z-Beam Boltless Steel Shelving with Laminate Shelves

Industrial grade steel construction with durable silver vein finish. Z-Beam design beams for strength and rigidity. Six shelves with white laminate board decking can be adjusted in 1½" increments. Laminate shelves resist moisture and are easy to clean. Smooth post design conceals assembly. Assembles in minutes with no nuts or bolts as a vertical shelving unit or horizontal as a workbench.

UR4818HPSVL6	48"W X 18"D X 84"H	6 SHELVES	500 LBS. SHELF CAPACITY
--------------	--------------------	-----------	-------------------------



Z-Beam Boltless Steel Shelving with Laminate Shelves

Industrial grade steel construction with Z-Beam design for strength and rigidity. Six shelves with gray laminate board decking can be adjusted in 1½" increments. Laminate shelves resist moisture and are easy to clean. Smooth post design conceals assembly. Assembles in minutes with no nuts or bolts as a vertical shelving unit or horizontal as a workbench. Silver enamel finish. This unit is NSF Certified.

ZR481884L6P	48"W X 18"D X 86"H	6 SHELVES	800 LBS. SHELF CAPACITY
-------------	--------------------	-----------	-------------------------



All products on this page are F.O.B. Illinois only.

STEEL SHELVING



Treadplate Welded Rack

Four wire shelves provide ample storage. Shelves adjust in 3" increments to fit any storage needs. NSF certified. Heavy-duty steel construction for durability. Treadplate embossed beam design. 1,200 lbs. shelf capacity.

TP722472W4	77"W X 24"D X 72"H	4 SHELVES
TP722472W3	77"W X 24"D X 72"H	3 SHELVES

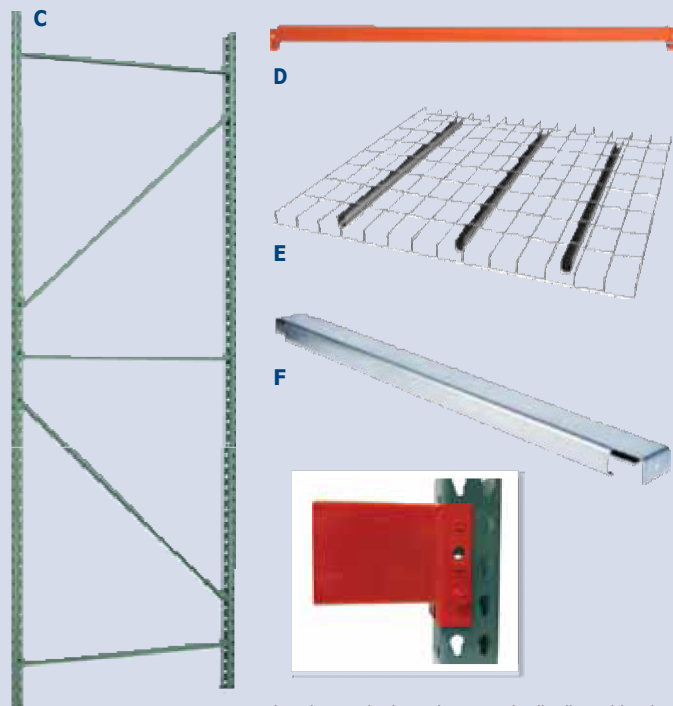


4-Level Treadplate Welded Rack

The Muscle Rack steel storage rack has an 8,000-pound capacity, with up to 1,200 pounds of evenly distributed weight across each shelf. The welded steel frames have beams for extra strength, and four adjustable wire steel shelves with center supporting channels. Its embossed tread plate design makes it look great while organizing and storing your items. The shelves adjust in 3" increments to accommodate items of varying heights.

TP481872W4	48"W X 18"D X 72"H
TP601872W4	60"W X 18"D X 72"H

PALLET RACK COMPONENTS



Load capacity based on evenly distributed loads.

C. Upright Frames

Heavy-duty 13 gauge welded roll formed steel construction. Features teardrop punch pattern every 2" for flexible beam adjustability. Horizontal and diagonal braces create a strong, stable system. Welded pre-punched footplates for easy anchoring. Durable powder coat finish in green.

RF207	42"D X 96"H	19,300 LBS. LOAD CAPACITY
RF209	42"D X 120"H	19,300 LBS. LOAD CAPACITY
RF211	42"D X 144"H	19,300 LBS. LOAD CAPACITY

D. Beams

Heavy-duty 16 gauge roll formed welded steel. 1 1/8" high step to accommodate cross bars and decking. Interlock stud and keyhole connection automatically locks into columns. Piston lock secures beam into place. No tools for installation. Durable finish in orange.

RB214	96"W X 2 3/4"H	4,120 LBS. LOAD CAPACITY PER BEAM PAIR
RB215	108"W X 2 3/4"H	4,046 LBS. LOAD CAPACITY PER BEAM PAIR
RB232	120"W X 2 3/4"H	4,368 LBS. LOAD CAPACITY PER BEAM PAIR

E. Wire Decking

Heavy duty 5 gauge wire mesh allows visibility, air and sprinkler penetration for enhanced fire safety. Easy to install, the waterfall style decking wraps over the beam to provide a secure brace, eliminating movement between deck and beam. Includes three support channels. Powder coat finish.

RWD4246	46"W X 42"D	2,500 LBS. LOAD CAPACITY
RWD4252	52"W X 42"D	2,500 LBS. LOAD CAPACITY
RWD4258	58"W X 42"D	2,500 LBS. LOAD CAPACITY

F. Pallet Rack Support Crossbars

Installs between two beams to assist in supporting pallet loads. 16 gauge steel with pre-galvanized finish.

RA221	42"D X 2"H
-------	------------

F.O.B. Illinois only.

STEEL SHELVING

Boltless Rivet Shelving

Industrial grade steel construction. Shelves hold up to 800 lbs. of evenly distributed loads and adjust in 1½" increments. Five durable particle board shelves. Easily assembles in minutes either vertically or horizontally. Gray powder coat finish.

CR3618	36"W X 18"D X 72"H	5 SHELF PARTICLE BOARD
CR4824	48"W X 24"D X 72"H	5 SHELF PARTICLE BOARD



Boltless Rivet Shelving

Industrial grade steel construction with Z-beam design for strength and rigidity. Holds up to 4,000 lbs. total weight or 800 lbs. on each individual shelf, based on evenly distributed loads. Five shelves with wire decking can be adjusted in 1½" increments for a customized storage space. Assembles in minutes with no nuts or bolts as a vertical shelving unit or horizontal as a workbench. Durable red powder coat finish.

UR301260WD5-R	30"W X 12"D X 60"H	5 SHELVES
UR184872-R	48"W X 18"D X 72"H	5 SHELVES
UR482472WD5-R	48"W X 24"D X 72"H	5 SHELVES
UR601872WD5-R	60"W X 18"D X 72"H	5 SHELVES
UR602472WD5-R	60"W X 24"D X 72"H	5 SHELVES



Mobile Storage Rack

This Mobile Storage Rack is a perfect solution for organizing and maximizing your cluttered home or office storage space. The open design makes it easy to store bins, supplies, paper, etc. These handy "rolling shelves" give you the freedom to customize your storage area. Once the rack is in position, lock the casters to prevent movement when loading and unloading the shelves. Shelves can be adjusted in 6" increments. Unit can hold a maximum of 300 lbs. – 75 lbs. per shelf. Assembly required; tools included. 3" casters.

5418-3	35"W X 20"D X 75¾"H
--------	---------------------



All products on this page are F.O.B. Illinois only.

WIRE SHELVING



A



B



C



D



E



F

A. Mini Wire Shelving

The Muscle Rack WS181018 is a standing three-shelf unit made of chrome-plated steel wire to support an 88 lb. per shelf capacity. This shelf unit has an open wire design to permit greater penetration of water from fire sprinklers, permit more light and air circulation in the work space, and resist dust build-up. This unit has a chrome finish for dirt and corrosion resistance and for durability. The shelves on this unit are adjustable in 1 inch increments for precise adjustment of shelf heights. This shelf unit has adjustable levelers for uneven flooring. The assembled unit is 18 x 18 x 10 inches (H x W x D). (H is height, the vertical distance from lowest to highest point; W is width, the horizontal distance from left to right; D is depth, the horizontal distance from front to back.) Assembly instructions are included. No tools are required. Standing shelf units are commonly used to store items to help create organized, efficient, and safer work areas. These systems typically consist of a frame or rack with open shelves. Added components such as casters, wheels, or handles are used for applications that require mobility. Standing shelf units are used in a variety of office, industrial, educational, and residential settings.

WS181018-C	18"W X 10"D X 18"H
------------	--------------------

B. Wire Dish Rack

The Muscle Rack three-tier chrome wire dish rack provides extra space for draining and drying dishes. The lower tier is designed to hold cups, mugs and larger kitchen utensils. The chrome-plated wire rack is equipped with a w-shaped shelf for dishes, a shelf for bowls or cups, and a separate cutlery holder.

WDR181217	18"W X 12"D X 17"H
-----------	--------------------

C. Wire Corner Shelving

Maximize your space and organize your clutter with this Muscle Rack white wire corner shelf. It cleverly tucks away in a corner, allowing you to turn an awkward waste of space into a functional storage nook. Adjust the height of each shelf by snapping the anti-slip clips onto the desired position, then insert and overlay the shelf over the clips to secure position. Integrated adjustable leveling feet keep the shelf level on uneven ground.

WSCR141447	14"W X 14"D X 47"H
------------	--------------------

D. Ceiling Storage Rack

These units are ideal for storing holiday decorations, luggage, coolers, sporting goods and other large, bulky items. High-quality storage racks help to make your garage a more functional space for your vehicles. Shelving is easy to assemble and fits in any space.

LR4848-SV	48"W X 48"D X 28"H	300 LB. CAPACITY
LR4896-SV	48"W X 96"D X 28"H	600 LB. CAPACITY

3-Level Mini Welded Racks

Perfect for organizing your garage, home, or workshop, metal shelving unit is made with durable welded steel. It includes reversible light and dark woodgrain shelves. The three adjustable laminated shelves provide ample storage space to accommodate a variety of heavy items, with each shelf supporting up to 500 pounds.

E.	MER4812BZL3	48"W X 12"D X 42"H
F.	MER4812W3	55"W X 14"D X 54"H

All products on this page are F.O.B. Illinois only.

CHROME WIRE SHELVING

A. Heavy-Duty Chrome Wire Shelving

Shelves have 600-800 lbs. capacity, based on evenly distributed loads. The four shelves are fully adjustable in 1" increments. Easy to assemble with no tools required. Contemporary design with chrome finish. NSF Certified. Accessories available.

W" X D"	74"H	86"H	SHELF CAPACITY
36"W X 18"D	WS361874-C	WS361886-C	800 LBS. SHELF CAPACITY
36"W X 24"D	WS362474-C	WS362486-C	800 LBS. SHELF CAPACITY
48"W X 12"D	WS481274-C	WS481286-C	800 LBS. SHELF CAPACITY
48"W X 18"D	WS481874-C	WS481886-C	800 LBS. SHELF CAPACITY
48"W X 24"D	WS482474-C	WS482486-C	800 LBS. SHELF CAPACITY
60"W X 18"D	WS601874-C	WS601886-C	800 LBS. SHELF CAPACITY
60"W X 36"D	WS603674-C	WS603686-C	800 LBS. SHELF CAPACITY
72"W X 12"D	WS721274-C	WS721286-C	800 LBS. SHELF CAPACITY
72"W X 18"D	WS721874-C	WS721886-C	800 LBS. SHELF CAPACITY
72"W X 24"D	WS722474-C	WS722486-C	800 LBS. SHELF CAPACITY
72"W X 36"D	WS723674-C	WS723686-C	800 LBS. SHELF CAPACITY



Accessories (A. Only)

B.	WSCASTER4	4" RUBBER CASTERS WITH BRAKE (SET OF 4)	660 LBS. OVERALL WEIGHT CAPACITY
B.	WSCASTER5	5" RUBBER CASTERS WITH BRAKE (SET OF 4)	1000 LBS. OVERALL WEIGHT CAPACITY

Adding casters reduces overall weight capacity. See overall weight capacity for each caster size.

C. Light-Duty Chrome Wire Shelving

Shelves have 85-100 lbs. capacity, based on evenly distributed loads. Shelves are fully adjustable in 1" increments. Easy to assemble with no tools required. NSF Certified.

WS121212-C	12"W X 12"D X 12"H	2 SHELVES	85 LBS. SHELF CAPACITY	CHROME
WS241430	24"W X 14"D X 30"H	3 SHELVES	100 LBS. SHELF CAPACITY	CHROME
WS201232-C	20"W X 12"D X 32"H	4 SHELVES	85 LBS. SHELF CAPACITY	CHROME
WS201232-B	20"W X 12"D X 32"H	4 SHELVES	85 LBS. SHELF CAPACITY	BLACK



D. Mobile Chrome Wire Shelving

Shelves have 110-600 lbs. capacity, based on evenly distributed loads. Shelves are fully adjustable in 1" increments. Easy to assemble. Four casters (with brakes) for easy mobility. NSF Certified. Model EZGR4818-RW3 has three garment bars, two full shelves, two half shelves and six casters.

MWS221333	22"W X 13"D X 33"H	3 SHELVES	250 LBS. SHELF CAPACITY	CHROME	2" NYLON CASTERS
MWS301460	30"W X 14"D X 60"H	5 SHELVES	200 LBS. SHELF CAPACITY	SILVER	2" NYLON CASTERS
MWS361454	36"W X 14"D X 54"H	4 SHELVES	250 LBS. SHELF CAPACITY	BLACK	2" NYLON CASTERS
MWS361872	36"W X 18"D X 72"H	5 SHELVES	500 LBS. SHELF CAPACITY	CHROME	3" RUBBER CASTERS
MWS481872	48"W X 18"D X 72"H	4 SHELVES	250 LBS. SHELF CAPACITY	BLACK	2" NYLON CASTERS
MWS481874-B	48"W X 18"D X 74"H	6 SHELVES	600 LBS. SHELF CAPACITY 200 LBS. WITH CASTERS	BLACK	3" RUBBER CASTERS
EZGR4818-RW3	48"W X 18"D X 74"H	4 SHELVES	110 LBS. SHELF CAPACITY	CHROME	3" RUBBER CASTERS



Mobile Chrome Wire Carts

Shelves have 110-800 lbs. capacity, based on evenly distributed loads. Shelves are fully adjustable in 1" increments. Easy to assemble. Four casters (with brakes) for easy mobility. NSF Certified.

E.	MWS361838	36"W X 18"D X 38"H	3 SHELVES	800 LBS. SHELF CAPACITY	CHROME	4" RUBBER CASTERS
E.	MWS362438	36"W X 24"D X 38"H	3 SHELVES	600 LBS. SHELF CAPACITY	CHROME	4" RUBBER CASTERS
E.	MWS482438	48"W X 24"D X 38"H	3 SHELVES	600 LBS. SHELF CAPACITY	CHROME	4" RUBBER CASTERS
F.	MKT241434	24"W X 14"D X 34"H	3 SHELVES WITH LINERS	110 LBS. SHELF CAPACITY	BLACK	1½" NYLON CASTERS
G.	MKTBB242036	24"W X 20"D X 36"H	2 SHELVES WITH BAMBOO TOP	175 LBS. SHELF CAPACITY	CHROME	3" RUBBER CASTERS



F.O.B. Illinois only.

Sandusky Cabinets, Lee Metal, Buddy Products and Atlantic Metal have been major suppliers of Steel Storage Solutions for over 80 years.

Our recently combined companies provide a more diverse and broader product line focused on the office, commercial, industrial and educational markets. Our three strategically located shipping locations (California, Tennessee and Pennsylvania) deliver the lowest logistics costs and fastest delivery times in the industry while ensuring that your product is handled a minimal number of times in transit.

» **We look forward to working with you and the opportunity to supply your storage needs.**



www.SanduskyLee.com